

Архангельск (8182)63-90-72  
 Астана (7172)727-132  
 Астрахань (8512)99-46-04  
 Барнаул (3852)73-04-60  
 Белгород (4722)40-23-64  
 Брянск (4832)59-03-52  
 Владивосток (423)249-28-31  
 Волгоград (844)278-03-48  
 Вологда (8172)26-41-59  
 Воронеж (473)204-51-73  
 Екатеринбург (343)384-55-89  
 Иваново (4932)77-34-06

Ижевск (3412)26-03-58  
 Иркутск (395)279-98-46  
 Казань (843)206-01-48  
 Калининград (4012)72-03-81  
 Калуга (4842)92-23-67  
 Кемерово (3842)65-04-62  
 Киров (8332)68-02-04  
 Краснодар (861)203-40-90  
 Красноярск (391)204-63-61  
 Курск (4712)77-13-04  
 Липецк (4742)52-20-81

Киргизия (996)312-96-26-47

Магнитогорск (3519)55-03-13  
 Москва (495)268-04-70  
 Мурманск (8152)59-64-93  
 Набережные Челны (8552)20-53-41  
 Нижний Новгород (831)429-08-12  
 Новокузнецк (3843)20-46-81  
 Новосибирск (383)227-86-73  
 Омск (3812)21-46-40  
 Орел (4862)44-53-42  
 Оренбург (3532)37-68-04  
 Пенза (8412)22-31-16

Россия (495)268-04-70

Пермь (342)205-81-47  
 Ростов-на-Дону (863)308-18-15  
 Рязань (4912)46-61-64  
 Самара (846)206-03-16  
 Санкт-Петербург (812)309-46-40  
 Саратов (845)249-38-78  
 Севастополь (8692)22-31-93  
 Симферополь (3652)67-13-56  
 Смоленск (4812)29-41-54  
 Сочи (862)225-72-31  
 Ставрополь (8652)20-65-13

Казахстан (772)734-952-31

Сургут (3462)77-98-35  
 Тверь (4822)63-31-35  
 Томск (3822)98-41-53  
 Тула (4872)74-02-29  
 Тюмень (3452)66-21-18  
 Ульяновск (8422)24-23-59  
 Уфа (347)229-48-12  
 Хабаровск (4212)92-98-04  
 Челябинск (351)202-03-61  
 Череповец (8202)49-02-64  
 Ярославль (4852)69-52-93

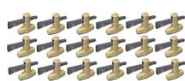
<https://celette.nt-rt.ru> || [cfe@nt-rt.ru](mailto:cfe@nt-rt.ru)

## TRUCKS

### SET OF BASES



### FIXING SET FOR 9120.023



### SET OF 6 MODULAR CROSSMEMBERS (Reference evolve in 955A.MPL.00)



### 4M PULLING TOWER



### ANCHORING COMPOSITION



CAT.6004 (4m)

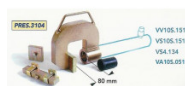
### PUPITRE HYDRO DE BPL 700 BAR 4 SORTIES



### MENYR 3 SET (2 Towers H=4,00M)



### 4-10T STRAIGHTENING PRESS



100 MM EXTENSION

250 MM EXTENSION



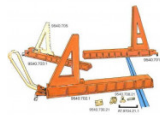
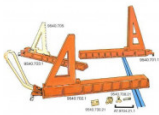
**500 MM EXTENSION**

**750 MM EXTENSION**



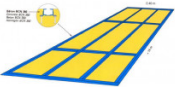
**ANCHORING SYSTEM AND WORKING SYSTEM**

**ANCHORING SYSTEM AND WORKING SYSTEM**



**IN-GROUND TRUCKS FRAME 2.4 ml x 16 ml**

**PERIPHERIC FRAME 18 ml X 6 ml**



**AVANCE RESPONDE**  
**AVANCE RESPONDE**  
**AVANCE RESPONDE**

AVANCE RESPONDE  
 AVANCE RESPONDE  
 AVANCE RESPONDE

ITEM	DESCRIPTION	QUANTITY
1	...	...
2	...	...
3	...	...
4	...	...
5	...	...
6	...	...
7	...	...
8	...	...
9	...	...
10	...	...
11	...	...
12	...	...
13	...	...
14	...	...
15	...	...
16	...	...
17	...	...
18	...	...
19	...	...
20	...	...
21	...	...
22	...	...
23	...	...
24	...	...
25	...	...
26	...	...
27	...	...
28	...	...
29	...	...
30	...	...
31	...	...
32	...	...
33	...	...
34	...	...
35	...	...
36	...	...
37	...	...
38	...	...
39	...	...
40	...	...
41	...	...
42	...	...
43	...	...
44	...	...
45	...	...
46	...	...
47	...	...
48	...	...
49	...	...
50	...	...
51	...	...
52	...	...
53	...	...
54	...	...
55	...	...
56	...	...
57	...	...
58	...	...
59	...	...
60	...	...
61	...	...
62	...	...
63	...	...
64	...	...
65	...	...
66	...	...
67	...	...
68	...	...
69	...	...
70	...	...
71	...	...
72	...	...
73	...	...
74	...	...
75	...	...
76	...	...
77	...	...
78	...	...
79	...	...
80	...	...
81	...	...
82	...	...
83	...	...
84	...	...
85	...	...
86	...	...
87	...	...
88	...	...
89	...	...
90	...	...
91	...	...
92	...	...
93	...	...
94	...	...
95	...	...
96	...	...
97	...	...
98	...	...
99	...	...
100	...	...

**HYDRAULIC EQUIPMENT**

**HYDRAULIC EQUIPMENT**



**CABIN CAMION MERCEDES ACTROS**

**CABIN CAMION MERCEDES ACTROS**



**ACCESSORIE of 21.BPL.540**

**ZINC SCREW HM 6X20 CL8.8**



**ZINC SCREW HM 10X50 CL8.8**

**ZINC SCREW HM 10X70 CL8.8**



**ZINC SCREW HM 20X80 CL8.8**

**ZINC SCREW CHC 8X10**



**ZINC SCREW CHC 8X16**

**ZINC SCREW CHC 8X25 DIN 912**



**ZINC SCREW CHC 8X50**

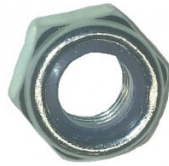
**ZINC SCREW CHC 8X60**



ZINC SCREW CHC 8X90



SECURITY NUT M10



SECURITY NUT M12



HIGH PULLING UNIT on CROSS-BEAM



STANDARD PULLING UNIT on CROSS-BEAM



PULLING UNIT with SLOTS



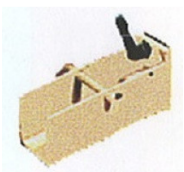
LANDMARK 4.9 of 02.BPL.540



Pullin Unit with gaps



HOLDING TUBE for RAM 20T or 30T



LANDMARK 6.2 of 02.BPL.540



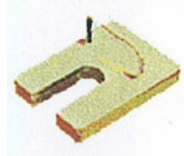
LANDMARK 6.3 of 02.BPL.540

CROSS-BEAM CLAMP



**BRIDLE for BPL CROSS-BEAM**

**BRIDLE for 02.BPL.540.21**



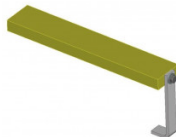
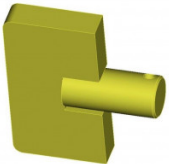
**BRIDLE BPL on RAIL 5000**

**BRIDLE for CROSS-BEAM for JOSAM CHASSIS**



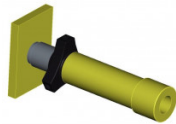
**BLADE THRUST - MALE STECK**

**DISTRIBUTION WEDGE**



**LANDMARK 11.2 of 02.BPL.540**

**SCREW CYLINDER**



**LANDMARK12.1 of 02BPL.540**

**LANDMARK 13.2 of 02.BPL.540**



**ANCHORING BLOCK with HOOK**



**LANDMARK 13.2 for 02.BPL.540.21**



**LANDMARK 13.3 for CHASSIS**



**LANDMARK 13.3 of 02.BPL.540.21**



**LANDMARK 713.31B of 9540.713**



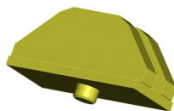
**TURNING ANCHORING BLOCK**



**LANDMARK 713.3A of 9540.713.3A**



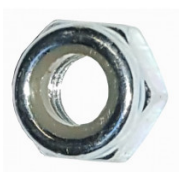
**CHAIN GUIDE**



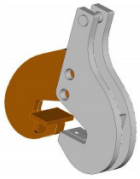
**NUTS HM12 CL8.8**



**SECURITY NUT M6**



**CLAW for I & U PROFILE**



**LANDMARK 15.1 of 02.BPL.540**



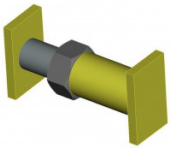
**LANDMARK 15.2 of 02.BPL.540**



**LANDMARK 15.3 of 02.BPL.540**



**SCREW CYLINDER**



**LANDMARK 16.3 of BPL.540 Thickness12**



**AXLE STAND**



**LANDMARK 17.3 for 02.BPL.540**



**STRAIGHTENING PRESS**



9540718

**LANDMARK 18.4 for 02.BPL.540**



**LANDMARK 18.6 for 02.BPL.540**

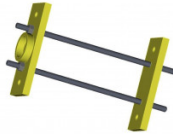
**LANDMARK 18.7 for 02.BPL.540**



**RAM SUPPORTING BRIDGE for CROSSMEMBER**



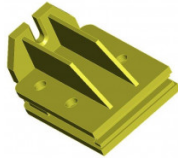
**RAM SUPPORTING YOKE**



**CHASSIS SUPPORT CROSSMEMBER**



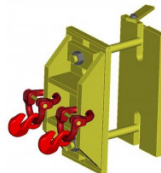
**DIAGONAL CLAMP**



**LINK**



**PULLING ANCHOR**



**LANDMARK 28 of 02.BPL.54R**



**DOUBLE BRIDEL of 02.BPL.540.11**



**SCREW RAM**



**PLANAGE PRESS**





**LANDMARK 32.2 of 02.BPL.540**



**PULLING HOOK**



**GIRAFE**



**ROLLER IRON + BRACE**



**SPACER ROLLER of 9540.736**



**20T REPRISE PULLING UNIT**



**LANDMARK F of 959.7136**



**LANDMARK H du 959.7136**



**TRUCK STEERING WHEELS ALIGNMENT  
ALONE WITHOUT STORAGE TROLLEY**



**ALIGNMENT KIT for TRUCK TWIN STEERED  
AXLES**



**RAIL U DE 100 BPL LG 2M (APPRET)**



**RAIL U DE 100 BPL LG 2.4M (APPRET)**



**RAIL U DE 100 BPL LG 0.7M (APPRET)**



**PLAQUE DE FIXATION DE RAIL BPL**



**PLAQUE DE FIXATION DE RAIL BPL**



**PLAQUE DE FIXATION DE RAIL BPL**



**BROCHE DE VEROUILLAGE BPL (ZINC)**



**CYLINDRICAL CAP of Diam 28**



**SQUARE CAP**

**SQUARE CAP of 40**



**GREY ELECTRIC CABLE 7G1**

**OIL TIN of 1 L**



**OIL TIN of 5 L**

**HYDROPNEUMATIC PUMP DISTANCE for  
TOUR MENYR GEN. 2**



**MORS 20X10 LG 150 (ZINGUE)**

**RESSORT COMPRESSION**



**PIN diameter 10 + WIRE**

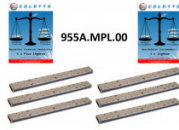
**BROCHE diam14:B77B+CABLE  
B70A+Goup.**



**PIN diameter 18 + WIRE**



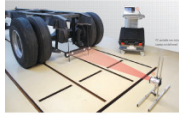
**SET OF 6 MODULAR CROSSMEMBERS  
C'''**



**CABINE RENAULT T / K / C**



**CHASSIS ALIGNMENT SYSTEM**



**WHEELS ALIGNMENT SYSTEM +  
STORAGE TROLLEY**



**KING PIN KIT**



**AUTO CENTERING FREELANCING**



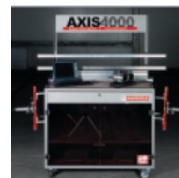
**COMPLEMENTARY SET of CMC4000 for  
TRUCK STEERING WHEELS ALIGNMENT  
SYSTEM + STORAGE TROLLEY**



**TRUCK STEERING WHEELS ALIGNMENT  
+ STORAGE TROLLEY**



**TRUCK STEERING WHEELS ALIGNMENT  
+ BIG STORAGE TROLLEY**



### Upgrade Kit for COMMERCIAL VEHICLE



### PUPITRE HYDRO DE BPL 700 BAR 4 SORTIES



### 3/2 DISTRIBUTOR WITH PUSH BUTTON



### COMPLETE EXTENSION 100MM (set of 2)



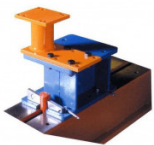
### LANDMARK C FROM 959.7136



### INSTALLATION CADRE BPL



### REP. 7 DU MPL29.000 (PHOS.)



### 30T PUSH-RAM (THREADED)



Архангельск (8182)63-90-72  
Астана (7172)727-132  
Астрахань (8512)99-46-04  
Барнаул (3852)73-04-60  
Белгород (4722)40-23-64  
Брянск (4832)59-03-52  
Владивосток (423)249-28-31  
Волгоград (844)278-03-48  
Вологда (8172)26-41-59  
Воронеж (473)204-51-73  
Екатеринбург (343)384-55-89  
Иваново (4932)77-34-06

Ижевск (3412)26-03-58  
Иркутск (395)279-98-46  
Казань (843)206-01-48  
Калининград (4012)72-03-81  
Калуга (4842)92-23-67  
Кемерово (3842)65-04-62  
Киров (8332)68-02-04  
Краснодар (861)203-40-90  
Красноярск (391)204-63-61  
Курск (4712)77-13-04  
Липецк (4742)52-20-81  
Киргизия (996)312-96-26-47

Магнитогорск (3519)55-03-13  
Москва (495)268-04-70  
Мурманск (8152)59-64-93  
Набережные Челны (8552)20-53-41  
Нижний Новгород (831)429-08-12  
Новокузнецк (3843)20-46-81  
Новосибирск (383)227-86-73  
Омск (3812)21-46-40  
Орел (4862)44-53-42  
Оренбург (3532)37-68-04  
Пенза (8412)22-31-16  
Россия (495)268-04-70

Пермь (342)205-81-47  
Ростов-на-Дону (863)308-18-15  
Рязань (4912)46-61-64  
Самара (846)206-03-16  
Санкт-Петербург (812)309-46-40  
Саратов (845)249-38-78  
Севастополь (8692)22-31-93  
Симферополь (3652)67-13-56  
Смоленск (4812)29-41-54  
Сочи (862)225-72-31  
Ставрополь (8652)20-65-13  
Казахстан (772)734-952-31

Сургут (3462)77-98-35  
Тверь (4822)63-31-35  
Томск (3822)98-41-53  
Тула (4872)74-02-29  
Тюмень (3452)66-21-18  
Ульяновск (8422)24-23-59  
Уфа (347)229-48-12  
Хабаровск (4212)92-98-04  
Челябинск (351)202-03-61  
Череповец (8202)49-02-64  
Ярославль (4852)69-52-93